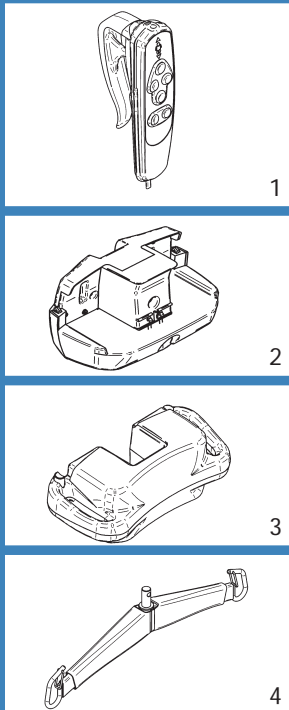


Total Lift

Graduate

lifting capacity:
350 lb / 159 kg / 25.04 st

# PRODUCT	DESCRIPTION	MARKET
#82601001	Floor lift - Graduate	North America
#82601004	Floor lift - Graduate	Australia
#82601008	Floor lift - Graduate	Europe & United Kingdom



√ = Included / 0 = Optional

# PART	DESCRIPTION	#82601001	#82601004	#82601008
1 #700.13610	Hand Control	√	√	√
2 #700.16200	Battery Pack	√	√	√
3 #700.16051	Wall charger - North America	0		
3 #700.16053	Wall charger - Europe			0
3 #700.16054	Wall charger - Australia		0	
3 #700.16055	Wall charger - United Kingdom			0
4 #700.05496	Spreader bar	√	√	√

GRADUATE	CONTROL BOX WITH INTEGRATED CHARGER
#82601001	#700.16005.2
#82601004	#700.16005.2
#82601008	#700.16005.2

SUGGESTED SLINGS & STRETCHERS	Hammock & Hammock 6	Hygienic	Quick Fit	Band	Chest	Total transfer	Combi	Repositioning	Bariatric	Walking	Soft	Universal	Mergue
	Slings											Stretchers	
	√	√	√				√					√	√

(For more details, look into the Sling Section)

FEATURES

Weight	40.7 kg / 89.5 lb / 6.41 st
Lifting capacity	159 kg / 350 lb / 25.04 st
Soft start & stop movement	

SAFETY FEATURES

Dual controls	
Emergency Shut-Off	
Manual emergency lowering device	Slowly drop to the desired level

TECHNICAL SPECIFICATIONS

Control box - CSA, UL & CE approved

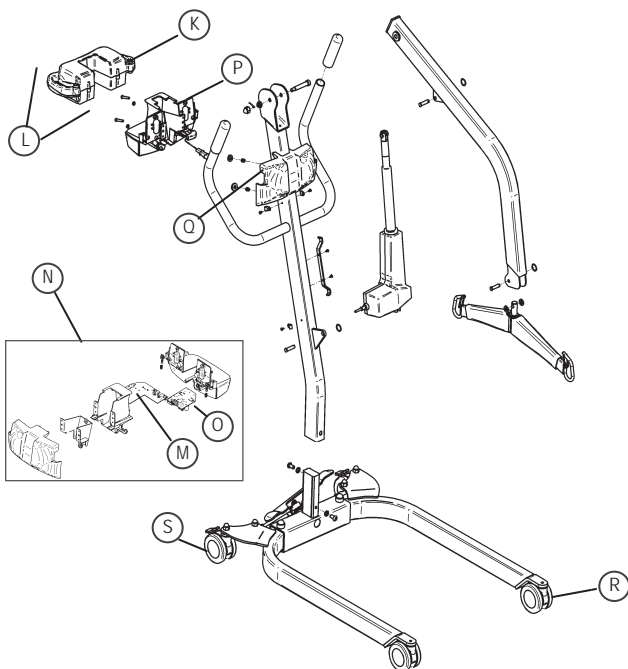
BATTERY SPECIFICATIONS

Rechargeable & removable battery pack	(2X) 12Vdc, 5Ah
Charger	Integrated, plug in lift
Battery capacity with load of 90 kg / 200 lb / 14.17 st	Up to 100 Lifts per charge
Low battery warning indicator	Visual
Charge input	90-240 Vac, 50-60 Hz, 27 VA
Charge indicator	Visual
Charging time	3-4 hours

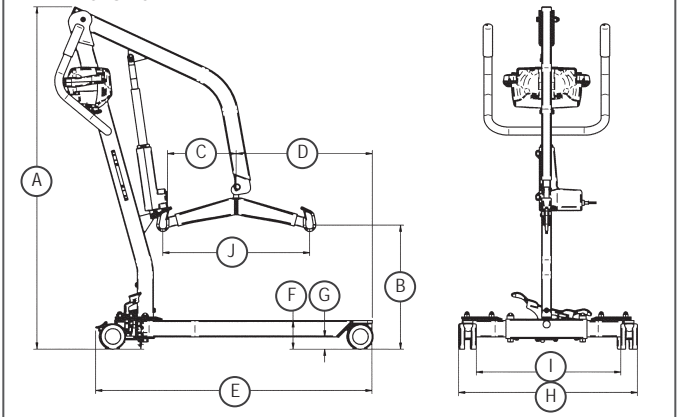
BASE

Material	Steel
Cab	Fire retardant plastic
Finish	Powder Coat Beige

EXPLODED VIEW



DIMENSIONS



DIMENSIONS

DESCRIPTION	HOISTING HEIGHT AT :			
	Min		Max	
	MM	IN	MM	IN
A Total lift height	1350	53.1	1960	77.2
B Hoisting height at connecting points	490	19.3	1765	69.5
C CSP Hoisting reach	270	10.6	335	13.2
D CSP from base end	535	21.1	470	18.5
		mm		in
E Base total length	1090		42.9	
F Base height	112		4.4	
G Base floor clearance	48		1.9	
H External base width (legs closed)	700		27.6	
H External base width (legs open)	1110		43.7	
I Internal base width (legs closed)	570		22.4	
I Internal base width (legs open)	990		39.0	
J Connecting points distance	580		22.8	
	Turning radius	945		37.2
	Minimum door requirement	660		26.0

COMMON SPARE PARTS

K	#403.10500 (X2)	Battery
L	#700.16200	Battery pack
M	#492.0045-3	Circuit board - Control box
N	#700.16051	Wall charger - North America
N	#700.16053	Wall charger - Europe
N	#700.16054	Wall charger - Australia
N	#700.16055	Wall charger - United Kingdom
O	#492.00031-4	Circuit board - Charger
P	#700.16005.2	Control box (with charger)
Q	#E6520	Actuator
R	#000.20430	Caster Front
S	#000.20435	Caster back
T	#492.00045-2	Circuit board - Wall charger