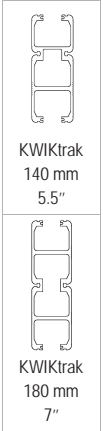


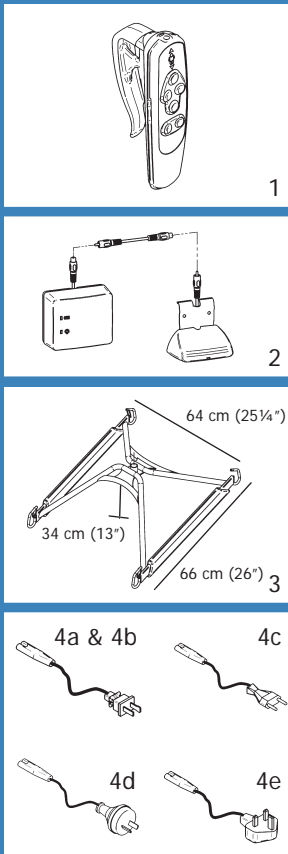
Ceiling Lift - Fixed

# PRODUCT	DESCRIPTION	MARKET
#9120001	V10 / 4 Way - KWIKtrak	NORTH AMERICA
#9120004	V10 / 4 Way - KWIKtrak	AUSTRALIA
#9120008	V10 / 4 Way - KWIKtrak	EUROPE & UNITED KINGDOM



V10

Lifting capacity :
450 kg / 1000 kg / 70.86 st



√ = Included / O = Optional

# PART	DESCRIPTION	#9120001	#9120004	#9120008
1	#700.13650 Hand Control - 4 Way	√	√	√
2	#700.15500 Charging Station - KWIKtrak	√	√	√
3	#700.05570 4-point Spreader Bar	√	√	√
4a	#402.00001 Charger Power Cord - North America	√		
4b	#402.00002 Charger Power Cord - Japan			
4c	#402.00003 Charger Power Cord - Europe			√
4d	#402.00004 Charger Power Cord - Australia		√	
4e	#402.00005 Charger Power Cord - United Kingdom			√

	Hammock & Hammock 6	Hygienic	Quick Fit	Band	Chest	Total transfer	Combi	Repositioning	Bariatric	Walking	Soft	Universal	Morgue
	Slings										Stretchers		
SUGGESTED SLINGS & STRETCHERS										√			

(For more details, look into the Sling Section)

FEATURES

Weight	22 kg / 48 lb / 3.46 st
Lifting capacity	450 kg / 1000 lb / 70.86 st
Soft start & stop movement	
Return to charge function on handset	Lift cannot return to charger with load

SAFETY FEATURES

Emergency lowering device	Manual & electric
Emergency brake	Prevent free fall
Emergency Stop Pull Cord	

TECHNICAL SPECIFICATIONS

CSA, UL & CE approved	
Vertical displacement speed	3 cm/sec (1.2 in/sec) at 450 kg / 1000 lb / 70.86 st 4 cm/sec (1.6 in/sec) at 230 kg / 500 lb / 36.22 st
Horizontal displacement speed - Programmable	10, 14, 16 or 20 cm/sec (3.9, 5.5, 6.3 or 7.9 in/sec) Default : 16 cm/sec (6.3 in/sec)

BATTERY SPECIFICATIONS

Rechargeable sealed lead acid	(2X) 12VDC, 7Ah
Side rail mounting, position anywhere, charging system	
Battery capacity with load of 230 kg / 500 lb / 36.22 st	Up to 80 transfers
Low battery warning indicator - Visual & audible	
Charger input - 90-240 Vac, 50-60 Hz, 27 VA max.	
Charge indicator - Visual	

STRAP SPECIFICATIONS

Length	2.3 m (90½ in)
Automatically stops unit if twisted	
Tested for 2727 kg / 6000 lb / 429.4 st	

UNIT CONSTRUCTION

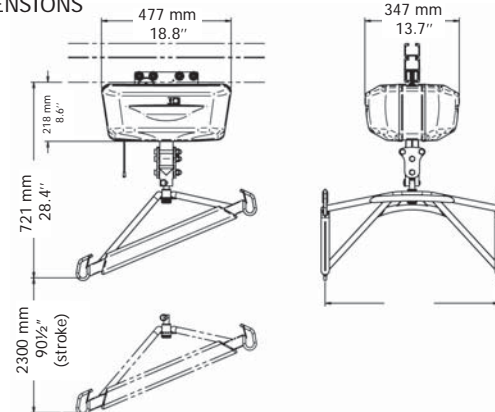
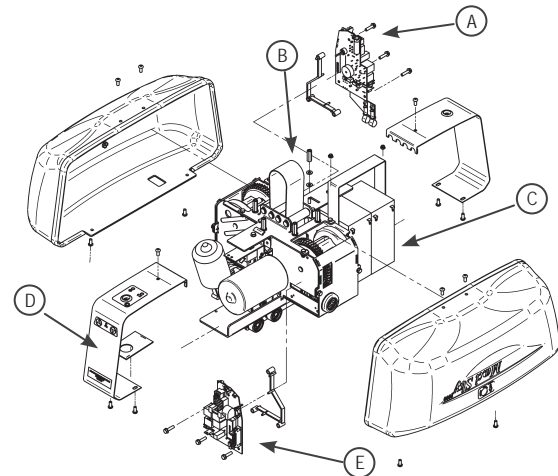
Frame - high strength rolled steel zinc plated
Cab - fire retardant plastic

COMMON SPARE PARTS

A	#492.00035-4	V10 - Master Board
B	#362.14020	V10 - Black Strap
C	#E0150 (X2)	Battery
D	#001.08070	Touch pad Membrane
E	#492.00035-5	V10 - Slave Board

ACCESSORIES

F	#402.15505	Charger extension - 2 m (78 in)
G	#700.00525	Scale Unit (North America & Australia)

DIMENSIONS

EXPLODED VIEW

ACCESSORIES
