

*BHM provides solutions*

*...because health matters  
for you and your loved one*



*Rose Niquette*  
a case study  
**V3**

Rose is not a typical 6 year old. Although her smile, laugh and “joie de vie” may be typical of a young girl her age, the daily challenges she faces and meets head-on would be a struggle for most of us to cope with. Rose’s mobility impairment, although not degenerative, will be with her for the rest of her life. She requires constant assistance in order to see to her daily needs. Providing her with accessibility, security and as much autonomy as possible is a labour of love for her mother Bridget. The assistance Bridget has gained since equipping their home with a BHM Medical V3 portable ceiling lift and KWIKtrak rail system has helped lighten her load.

“The more Rose grew, the more I started experiencing back problems while transferring her from place to place in order to provide her with the care that she needs.” confided Bridget. “Yes, she is just a little girl but none the less, lifting 56 lb / 25 kg numerous times during the course of the day was beginning to take its toll on me” she added.

The fact that the V3 is a portable lift not only makes it an economical solution for Rose’s family but a versatile one also. KWIKtrak rail has been installed in a number of areas of the home and the V3 is simply unclipped from one track system and clipped onto another. Weighing just 14 lb / 6.5 kg, the V3 is easy for Bridget to move from care area to care area. Rose’s bedroom, physio / massage area, bathroom, family room even their outdoor swimming pool are all accessible now.

Bridget takes great pride in her role as both mother and formal caregiver. Being able to provide the quality of care that Rose needs in her own home means her family is around her offering support and encouragement daily.

“I truly believe that home is where Rose should be. She needs us but equally important is the fact that we, her brothers and sisters, all of us as a family need her. Rose is our daily dose of inspiration”

# V3



## V3 - Product Profile

The V3 ceiling lift combines a sturdy design with economy and portability :

- Its compact size, retractable sling hooks and an ergonomic carrying handle facilitate portability from room to room.
- An handheld remote control and auxiliary controls on the lift are very practical for the caregiver.
- When it is time to recharge the V3, simply plug it in the nearest electrical outlet; the charger is integrated into the lift.
- A maintenance light informs you when the lift requires preventive maintenance, thus alleviating any risk of downtime.

## V3 options:

- Full range of slings: Hammock, Hygenic, Quick Fit, Combi, Repositioning, Walking Support.
- Door header pass through system.
- Weigh scale.
- Carrying bag.

### BHM MEDICAL INC.

Canada - 2001 Tanguay, Magog QC CANADA J1X 5Y5  
 Europe - PO Box 28993, London, SW14 8YL UNITED KINGDOM

Toll Free 1.800.868.0441  
 Telephone 819.868.0441  
 Fax 819.868.2249  
 Email [bhm@bhm-medical.com](mailto:bhm@bhm-medical.com)  
[europe@bhm-medical.com](mailto:europe@bhm-medical.com)

[www.bhm-medical.com](http://www.bhm-medical.com)

#009,00012

*BHM provides solutions*

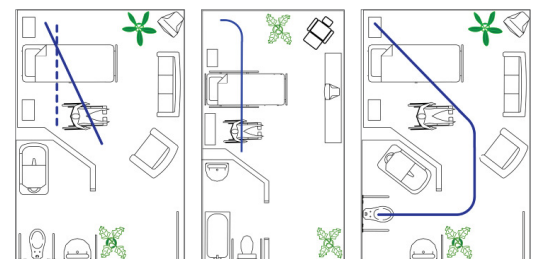
*...because health matters*

# KWIKtrak



## KWIKtrak - Product Profile

KWIKtrak's low profile design blends nicely into any rooms decor. A simple straight track design provides basic point to point transfers. The addition of a curved track allows access to the bathroom for toilet and bathing needs. Optional turntables, exchangers and gates eliminate almost all mobility barriers and allows you to use the V3 to its fullest potential.



Straight Track

"J" Track

Curved Track

----Dealer----