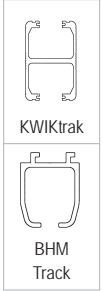


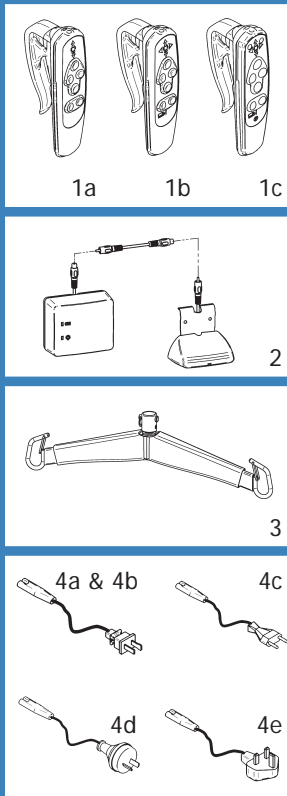
Ceiling Lift - Fixed

# V4 i

# PRODUCT	DESCRIPTION	MARKET
#9110001	V4i / 4 Way - KWIKtrak	NORTH AMERICA
#9110004	V4i / 4 Way - KWIKtrak	AUSTRALIA
#9110008	V4i / 4 Way - KWIKtrak	EUROPE & UNITED KINGDOM
#9110021	V4i / 4 Way - KWIKtrak - Wireless (I.R. remote)	NORTH AMERICA
#9110024	V4i / 4 Way - KWIKtrak - Wireless (I.R. remote)	AUSTRALIA
#9110201	V4i / 2 Way - KWIKtrak	NORTH AMERICA
#9111001	V4i / 4 Way - BHM Track	NORTH AMERICA



Lifting capacity :  
600 lb / 272 kg / 42.83 st



√ = Included / O = Optional

# PART	DESCRIPTION	#9110001	#9110004	#9110008	#9110021	#9110024	#9110201	#9111001
1a	#700.13600 Hand Control - 2 Way						√	
1b	#700.13650 Hand Control - 4 Way	√	√	√	√	√		√
1c	#700.13640 Hand Control - Wireless (I.R. Remote)				√	√		
2	#700.15500 Charging Station - KWIKtrak	√	√	√	√	√	√	
2	#700.15507 Charging Station - BHM Track							√
2	#700.15505 Center Track Charger - BHM Track							O
3	#700.05490 Carry Bar	√	√	√	√	√	√	√
4a	#402.00001 Charger Power Cord - North America	√			√		√	√
4b	#402.00002 Charger Power Cord - Japan							
4c	#402.00003 Charger Power Cord - Europe			√				
4d	#402.00004 Charger Power Cord - Australia		√			√		
4e	#402.00005 Charger Power Cord - United Kingdom			√				

	Hammock & Hammock 6	Hygienic	Quick Fit	Band	Chest	Total transfer	Combi	Repositioning	Bariatric	Walking	Soft	Universal	Mergue
	Slings										Stretchers		
SUGGESTED SLINGS & STRETCHERS	√	√	√				√	√	√	√	√		√

(For more details, look into the Sling Section)

**FEATURES**

Weight	12.7 kg / 28 lb / 2 st
Lifting capacity	272 kg / 600 lb / 42.83 st
Soft start & stop movement	
Return to charge function on handset	Lift cannot return to charger with load

**SAFETY FEATURES**

Emergency lowering device	Manual & electric
Emergency brake	Prevent free fall
Emergency Stop Pull Cord	

**TECHNICAL SPECIFICATIONS**

CSA, UL & CE approved	
Vertical displacement speed	6 cm/sec (2.4 in/sec) at 200 kg / 440 lb / 31.49 st  2.7 cm/sec (1.2 in/sec) at 600 lb / 272 kg / 42.83 st
Horizontal displacement speed - Programmable	10, 15, 20 or 25 cm/sec (3.9, 5.9, 7.9 or 9.8 in/sec) Default : 20 cm/sec (7.9 in/sec)

**BATTERY SPECIFICATIONS**

Rechargeable sealed lead acid	(2X) 12VDC, 5Ah
Side rail mounting, position anywhere, charging system	
Battery capacity with load of 91 kg / 200 lb / 14.33 st	Up to 120 transfers
Low battery warning indicator - Visual & audible	
Charger input – 90-240 Vac, 50-60 Hz, 27 VA max.	
Charge indicator - Visual	

**STRAP SPECIFICATIONS**

Length	2.3 m (90½ in)
Automatically stops unit if twisted	
Tested for 2727 kg / 6000 lb / 429.4 st	

**UNIT CONSTRUCTION**

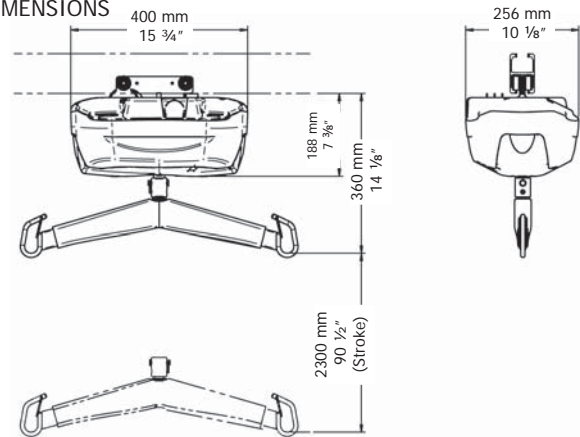
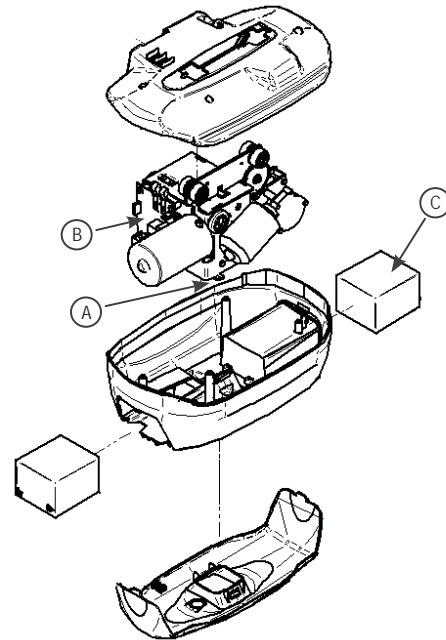
Frame – high strength rolled steel zinc plated	
Cab – fire retardant plastic	

**COMMON SPARE PARTS**

A	#362.14000	V4 - Strap
B	#492.00035-3	V4i Main Board
C	#403.10500 (X2)	Battery

**ACCESSORIES**

D	#402.15505	Charger extension - 2 m (78 in)
E1	#700.00510	Scale Unit
E2	#700.00530	Scale Unit - Class III (Europe & United Kingdom)

**DIMENSIONS**

**EXPLODED VIEW**

**ACCESSORIES**
