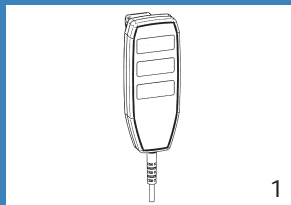


Sit / Stand Lift

Ergostand

Lifting capacity:
400 lb / 182 kg / 28.66 st



# PRODUCT	DESCRIPTION	MARKET
#ERGOSTAND	Floor lift- Ergostand	North America

√ = Included / 0 = Optional

# PART	DESCRIPTION	#ERGOSTAND
1	#A6800 Hand Control	√

ERGOSTAND	CONTROL BOX WITH INTEGRATED CHARGER
#ERGOSTAND	#A6700

SUGGESTED SLINGS & STRETCHERS	Hammock & Hammock 6	Hygienic	Quick Fit	Band	Chest	Total transfer	Combi	Repositioning	Bariatric	Walking	Soft	Universal	Margue
	Slings											Stretchers	
	√	√	√	√									

(For more details, look into the Sling Section)

FEATURES

Weight	45 kg / 90 lb / 7.09 st
Lifting capacity	182 kg / 400 lb / 28.66 st
Soft start & stop movement	

SAFETY FEATURES

Dual controls	
Emergency Shut-Off	
Manual emergency lowering device	Slowly drop to the desired level

TECHNICAL SPECIFICATIONS

Control box - CSA, UL & CE approved

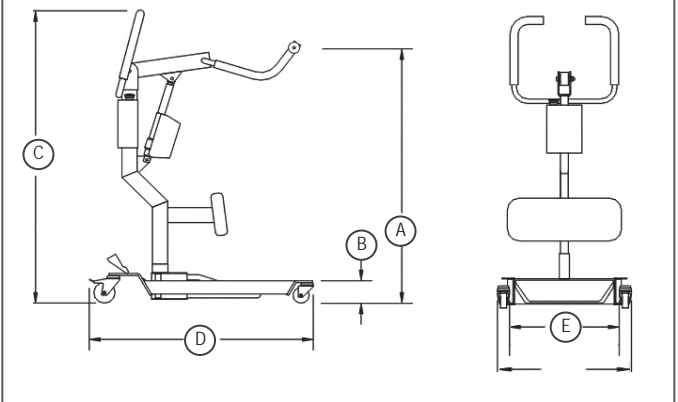
BATTERY SPECIFICATIONS

Rechargeable & removable battery pack	(2X) 12Vdc, 7Ah
Charger	Integrated, plug in lift
Battery capacity with load of 90 kg / 200 lb / 14.17 st	Up to 100 Lifts per charge
Low battery warning indicator	Visual
Charge input	120 Vac, 50-60 Hz, 0.5 A max.
Charge indicator	Visual
Charging time	3-4 hours

BASE

Material	Steel
Cab	Fire retardant plastic
Finish	Powder Coat White

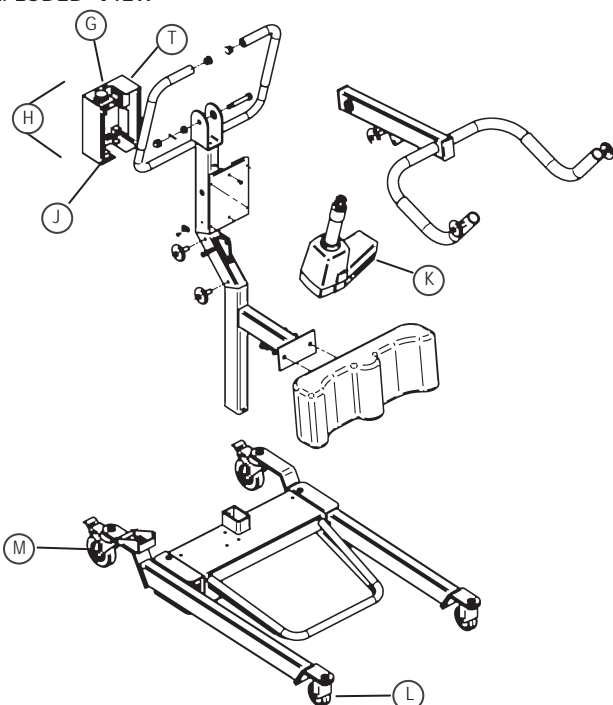
DIMENSIONS



DIMENSIONS

DESCRIPTION	HOISTING HEIGHT AT :			
	MIN		MAX	
	MM	IN	MM	IN
A Hoisting height at connecting points	520	20.5	1790	70.5
	mm		in	
B Base height	110		4.25	
C Total lift height	1400		55	
D Base total length	1250		49	
E External base width (legs closed)	610		24	
E External base width (legs open)	1080		42.5	
F Internal base width (legs closed)	200		38.5	
F Internal base width (legs open)	510		20	

EXPLODED VIEW



COMMON SPARE PARTS

G	#A6700	Circuit board - Control box
H	#A0150	Battery
I	#E6760-4F	Circuit board - Charger
J	#E6520	Actuator
K	#000.06000	Caster Front
L	#000.06010	Caster back