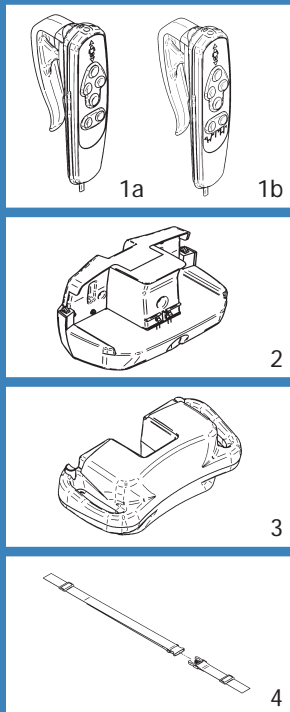


Sit / Stand Lift

Ministand

Lifting capacity:
350 lb / 159 kg / 25.04 st



# PRODUCT	DESCRIPTION	MARKET
#86500001	Floor lift - Ministand power base	North America
#86601001	Floor lift - Ministand with pedal base	North America
#86600004	Floor lift - Ministand power base	Australia
#86601008	Floor lift - Ministand with pedal base	Europe & United Kingdom

√ = Included / 0 = Optional

# PART	DESCRIPTION	#86500001	#86601001	#86600004	#86601008
1a #700.13610	Hand Control		√		√
1b #700.13630	Hand Control - power base	√		√	
2 #700.16051	Wall charger - North America	0	0		
2 #700.16054	Wall charger - Australia			0	
2 #700.16058	Wall charger - United Kingdom & Europe				0
3 #700.16200	Battery Pack	√	√	√	√
4 #361.20000	Knee Strap 56" (142 cm)	√	√	√	√

MINISTAND	CONTROL BOX WITH INTEGRATED CHARGER
#86500001	#700.16001.2
#86601001	#700.16006.2
#86600004	#700.16001.2
#86601008	#700.16006.2

SUGGESTED SLINGS & STRETCHERS	Hammock & Hammock 6	Hygienic	Quick Fit	Band	Chest	Total transfer	Combi	Repositioning	Bariatric	Walking	Soft	Universal	Margue
	Slings											Stretchers	
				√	√	√							

FEATURES

Weight	45.5 kg / 100 lb / 7.17 st
Lifting capacity	159 kg / 350 lb / 25.04 st
Soft start & stop movement	

SAFETY FEATURES

Dual controls	
Emergency Shut-Off	
Manual emergency lowering device	Slowly drop to the desired level

TECHNICAL SPECIFICATIONS

Control box - CSA, UL & CE approved

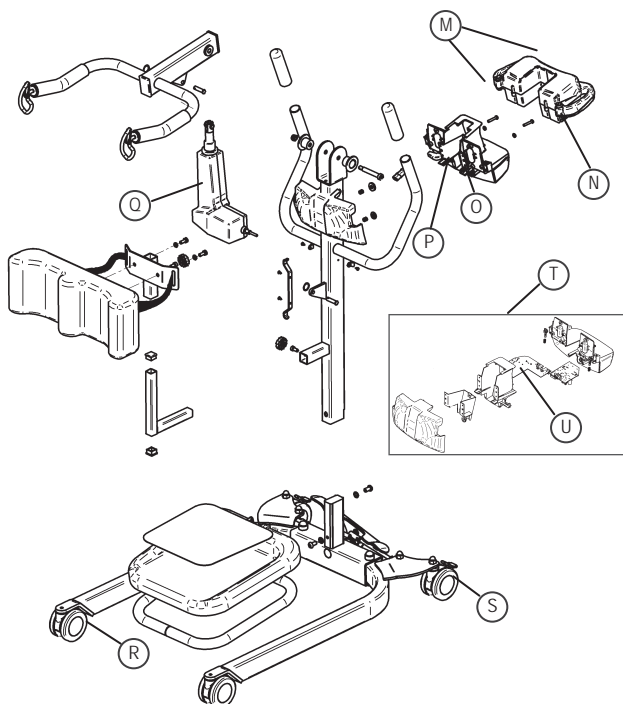
BATTERY SPECIFICATIONS

Rechargeable & removable battery pack	(2X) 12Vdc, 5Ah
Charger	Integrated, plug in lift
Battery capacity with load of 90 kg / 200 lb / 14.17 st	Up to 100 Lifts per charge
Low battery warning indicator	Visual
Charge input	90-240 Vac, 50-60 Hz, 27 VA
Charge indicator	Visual
Charging time	3-4 hours

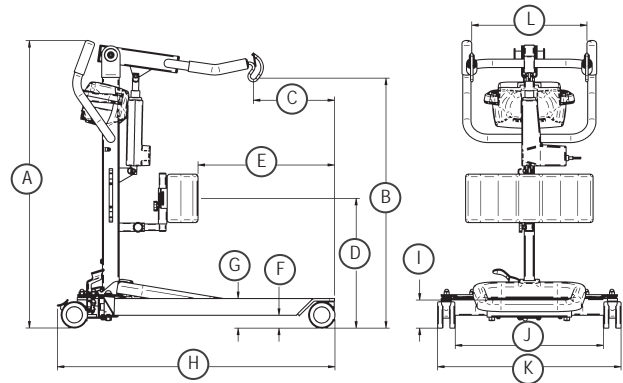
BASE

Material	Steel
Cab	Fire retardant plastic
Finish	Powder Coat Beige

EXPLODED VIEW



DIMENSIONS



DIMENSIONS

DESCRIPTION		HOISTING HEIGHT AT :			
		MIN		MAX	
		MM	IN	MM	IN
A	Total lift height	1090	42.9	1580	62.2
B	Hoisting height at connecting points	955	37.6	1540	60.6
C	Point CSP from base end	310	12.2	625	24.6
		mm		in	
D	Knee pad to ground (minimum)	520		20.5	
D	Knee pad to ground (maximum)	610		24.0	
E	Knee pad to base end (minimum)	490		19.3	
E	Knee pad to base end (maximum)	610		24	
F	Base floor clearance	50		2.0	
G	Base height	110		4.3	
H	Base total length	1050		41.3	
I	Foot plate to ground (minimum)	110		4.3	
I	Foot plate to ground (maximum)				
J	External base width (legs closed)	565		22.2	
J	External base width (legs open)	980		38.6	
K	Internal base width (legs closed)	700		27.6	
K	Internal base width (legs open)	1100		43.3	
L	Connecting points distance	440		17.3	
	Turning radius	830		32.7	
	Minimum door requirement	711		28.0	

COMMON SPARE PARTS

Part Number	Description
M #403.10500 (X2)	Battery
N #700.16200	Battery pack
O #492.0045-3	Circuit board - Control box
P #492.00031-4	Circuit board - Charger
Q #E6507	Actuator
R #000.20430	Caster Front
S #000.20435	Caster back
T #492.00045-2	Circuit board - Wall charger
U #700.16051	Wall charger - North America
U #700.16053	Wall charger - Europe
U #700.16055	Wall charger - United Kingdom